

Lifelong Loan Entitlement – SLC Update

Derek Ross

Executive Director: HE & FE Reform

Roles and Responsibilities for Delivering LLE

The introduction of LLE in 2025 and its future success in meeting the policy intent is owned by DfE, but relies on contributions from multiple stakeholders. The key elements of the changes and responsibility for delivery are outlined here:

Policy Infrastructure

LLE policy framework and the legislation that allows it to be delivered, including:

DfE

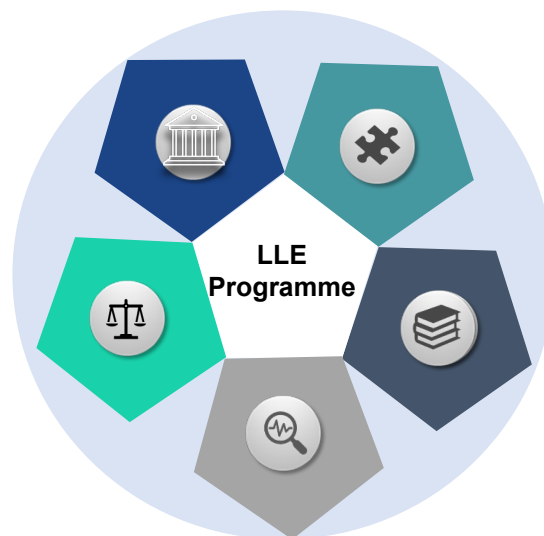
- OWNS: Consultation & Response
- OWNS: Policy Framework and Equality Impact Assessment
- OWNS: Regulations
- OWNS: Sector engagement on policy framework
- OWNS: Engagement with other domiciles

Student Finance Infrastructure

In line with Framework Agreement, provide the student finance elements of service including:

SLC

- OWNS: Apply, assess, pay services (including IaG)
- OWNS: Interfaces with providers for TFL payments
- OWNS: Interfaces with providers for course records
- OWNS: Customer servicing
- OWNS: Account record keeping
- OWNS: Operational and financial reporting
- OWNS: Ongoing maintenance and support of technology
- OWNS: Non functional requirements around Fraud, Security, Accessibility, GDPR etc
- JOINTLY OWNS: Repayment infrastructure with HMRC (already in place)



Communications

Deliver the ambition of students adopting new study patterns post-18 study:

DfE

- OWNS: Promotional campaigns to the public
- OWNS: Engagement with local employers to understand needs and economic drivers
- OWNS: Determines and measures any targets
- INFLUENCES: Adoption of cultural change
- INFLUENCES: Sector adoption of modular / stackable courses

Course Design & Delivery

Design, deliver and promote courses in a way that supports broader policy aspirations including:

HE / FE Providers

- OWNS: Design and deliver shorter courses of study
- OWNS: Link courses with recognised qualifications
- OWNS: Course recognition between providers
- OWNS: Incremental stacking of qualifications gained

Course Directory Search & Learner Records


Gaps in the current operating model still to be addressed by DfE including:

TBC

- OWNS: Research learning that can be funded by LLE
- OWNS: Comparison facility on courses / modules
- OWNS: Learning pathway planner
- OWNS: Credit transfer information
- OWNS: Repository for records of achievement, transcripts, qualifications and application related documents

Roles and Responsibilities for Delivering LLE

The introduction of LLE in 2025 and its future success in meeting the policy intent is owned by DfE, but relies on contributions from multiple stakeholders. The key elements of the changes and responsibility for delivery are outlined here:



Policy Infrastructure

LLE policy framework and the legislation that allows it to be delivered, including:

DfE


- OWNS: Consultation & Response**
- OWNS: Policy Framework and Equality Impact Assessment**
- OWNS: Regulations**
- OWNS: Sector engagement on policy framework**
- OWNS: Engagement with other domiciles**

Student Finance

In line with Financial... elements of s...

SLC

- OWNS: A...
- OWNS: In...
- OWNS: In...
- OWNS: C...
- OWNS: A...
- OWNS: O...
- OWNS: Ongoing maintenance and support of technology
- OWNS: Non functional requirements around Fraud, Security, Accessibility, GDPR etc
- JOINTLY OWNS: Repayment infrastructure with HMRC (already in place)



Communications

Deliver the ambition of students adopting new study patterns post-18 study:

to the public
employers to understand
res any targets
ral change
f modular / stackable

Delivery

*urses in a way that supports
ing:*

rter courses of study
nised qualifications
ween providers
f qualifications gained

Learner Records

el still to be addressed by

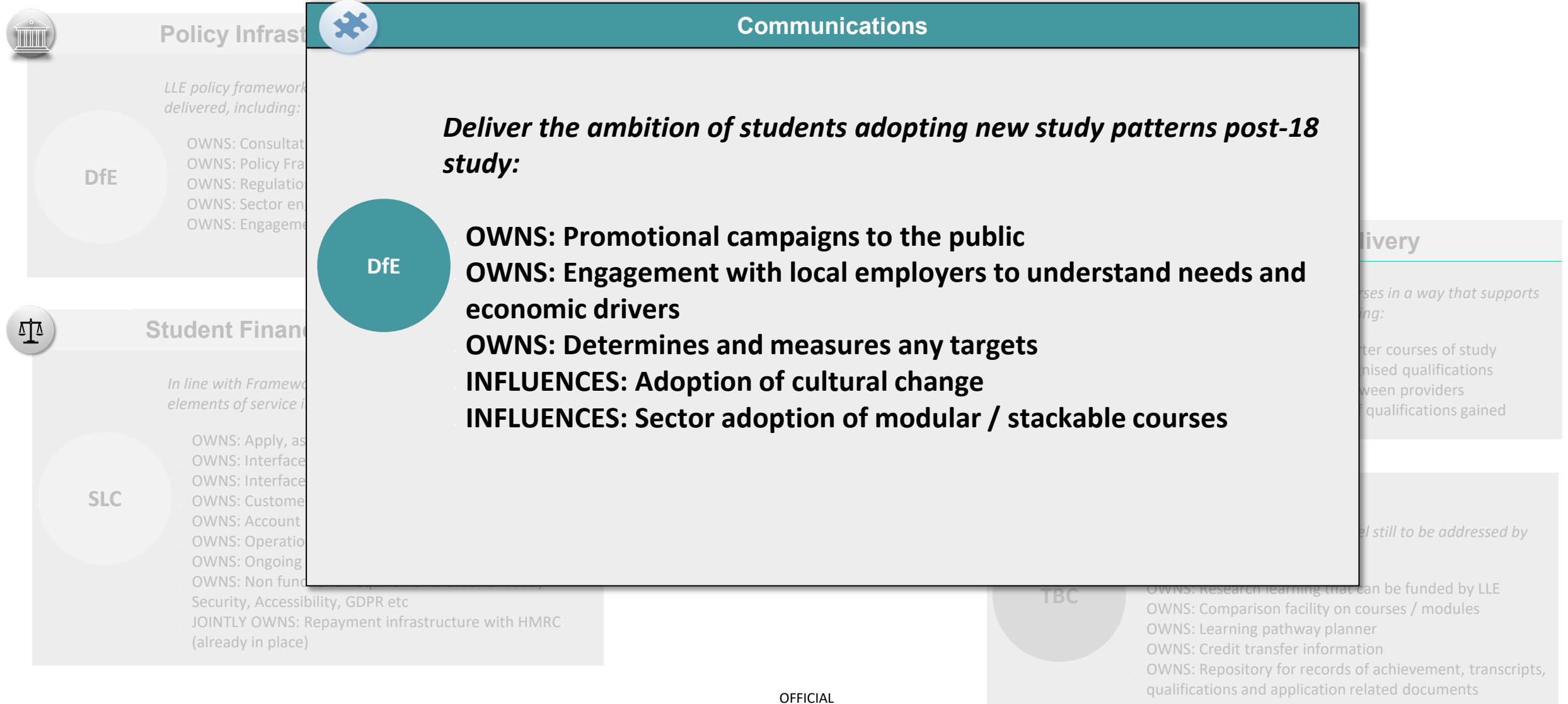
TBC

DfE including:

- OWNS: Research learning that can be funded by LLE
- OWNS: Comparison facility on courses / modules
- OWNS: Learning pathway planner
- OWNS: Credit transfer information
- OWNS: Repository for records of achievement, transcripts, qualifications and application related documents

Roles and Responsibilities for Delivering LLE

The introduction of LLE in 2025 and its future success in meeting the policy intent is owned by DfE, but relies on contributions from multiple stakeholders. The key elements of the changes and responsibility for delivery are outlined here:



Roles and Responsibilities for Delivering LLE

The introduction of LLE in 2025 and its future success in meeting the policy intent is owned by DfE, but relies on contributions from multiple stakeholders. The key elements of the changes and responsibility for delivery are outlined here:



Policy Infrastructure

LLE policy framework delivered, including:

DfE

OWNS: Consultation
OWNS: Policy Framework
OWNS: Regulation
OWNS: Sector engagement
OWNS: Engagement



Course Design & Delivery

Design, deliver and promote courses in a way that supports broader policy aspirations including:

HE / FE
Providers

OWNS: Design and deliver shorter courses of study
OWNS: Link courses with recognised qualifications
OWNS: Course recognition between providers
OWNS: Incremental stacking of qualifications gained



Student Finance

In line with Framework elements of service

SLC

OWNS: Apply, as
OWNS: Interface
OWNS: Interface
OWNS: Customer
OWNS: Account record keeping
OWNS: Operational and financial reporting
OWNS: Ongoing maintenance and support of technology
OWNS: Non functional requirements around Fraud, Security, Accessibility, GDPR etc
JOINTLY OWNS: Repayment infrastructure with HMRC (already in place)



Communications

... adopting new study patterns

... signs to the public
... employers to understand
... measures any targets
... cultural change
... on of modular / stackable

Learner Records

Gaps in the current operating model still to be addressed by DfE including:

TBC

OWNS: Research learning that can be funded by LLE
OWNS: Comparison facility on courses / modules
OWNS: Learning pathway planner
OWNS: Credit transfer information
OWNS: Repository for records of achievement, transcripts, qualifications and application related documents

Roles and Responsibilities for Delivering LLE

The introduction of LLE in 2025 and its future success in meeting the policy intent is owned by DfE, but relies on contributions from multiple stakeholders. The key elements of the changes and responsibility for delivery are outlined here:



Policy Infrastructure

LLE policy framework and the legislation delivered, including:

DfE

- OWNS: Consultation & Response
- OWNS: Policy Framework and Evidence
- OWNS: Regulations
- OWNS: Sector engagement on policy
- OWNS: Engagement with other stakeholders



Student Finance Infrastructure

In line with Framework Agreement elements of service including:

SLC

- OWNS: Apply, assess, pay services
- OWNS: Interfaces with providers
- OWNS: Interfaces with providers
- OWNS: Customer servicing
- OWNS: Account record keeping
- OWNS: Operational and financial
- OWNS: Ongoing maintenance
- OWNS: Non functional requirements
- Security, Accessibility, GDPR etc
- JOINTLY OWNS: Repayment infrastructure with HMRC (already in place)



Course Directory Search & Learner Records

Gaps in the current operating model still to be addressed by DfE including:

TBC

- OWNS: Research learning that can be funded by LLE**
- OWNS: Comparison facility on courses / modules**
- OWNS: Learning pathway planner**
- OWNS: Credit transfer information**
- OWNS: Repository for records of achievement, transcripts, qualifications and application related documents**



Communications

Deliver the ambition of students adopting new study patterns post-18 study:

- OWNS: Promotional campaigns to the public
- Management with local employers to understand economic drivers
- Determines and measures any targets
- Adoption of cultural change
- Sector adoption of modular / stackable

Design & Delivery

Design and promote courses in a way that supports student aspirations including:

- Design and deliver shorter courses of study
- Design courses with recognised qualifications
- Design course recognition between providers
- Design incremental stacking of qualifications gained

Hi, Alex Smith

Customer reference number: 00001112222

Welcome to your Lifelong Learning Account. You can apply for future funding for your next course, see what funding you have used previously, check your repayment balance, and use our tools to find out more about LLE and how you can use it over your lifetime.

Your lifelong loan balance

Calculated Personal Entitlement: £37,000



LLE Information

- [Update Contact Details](#)
- [Update Bank Details](#)

Help and Guidance

- [Understanding LLE](#)
- [Help & Support](#)
- [How you can continue to learn using your LLE](#)

Tools

- [Course Search](#)
- [Record of Achievement](#)

More Information

- [Repayment Information](#)

Learner record

What happens next

- Active Learning
- Previous Learning
- Record of Funding and Achievement**

Course Title	Start Date	End Date	Credit	Fee Amount	Action
Entry to Design	01 Jan 2026	01 Jan 2027	40	£2000	Update

Course search

Fund your next course

Search the course database to apply for funding for your next course.

[Course Funding Search](#)

Roles and Responsibilities for Delivering LLE

The introduction of LLE in 2025 and its future success in meeting the policy intent is owned by DfE, but relies on contributions from multiple stakeholders. The key elements of the changes and responsibility for delivery are outlined here:



Policy Infrastructure

LLE policy framework and the legislation delivered, including:

DfE

- OWNS: Consultation & Response
- OWNS: Policy Framework and Evidence
- OWNS: Regulations
- OWNS: Sector engagement on policy
- OWNS: Engagement with other stakeholders



Student Finance Infrastructure

In line with Framework Agreement elements of service including:

SLC

- OWNS: Apply, assess, pay services
- OWNS: Interfaces with providers
- OWNS: Interfaces with providers
- OWNS: Customer servicing
- OWNS: Account record keeping
- OWNS: Operational and financial
- OWNS: Ongoing maintenance
- OWNS: Non functional requirements
- Security, Accessibility, GDPR etc
- JOINTLY OWNS: Repayment infrastructure with HMRC (already in place)



Course Directory Search & Learner Records

Gaps in the current operating model still to be addressed by DfE including:

TBC

- OWNS: Research learning that can be funded by LLE
- OWNS: Comparison facility on courses / modules
- OWNS: Learning pathway planner
- OWNS: Credit transfer information
- OWNS: Repository for records of achievement, transcripts, qualifications and application related documents



Communications

Deliver the ambition of students adopting new study patterns post-18 study:

- OWNS: Promotional campaigns to the public
- Engagement with local employers to understand economic drivers
- Determines and measures any targets
- Adoption of cultural change
- Sector adoption of modular / stackable

Design & Delivery

Design and promote courses in a way that supports student aspirations including:

- Design and deliver shorter courses of study
- Design courses with recognised qualifications
- Design course recognition between providers
- Design incremental stacking of qualifications gained

Roles and Responsibilities for Delivering LLE

The introduction of LLE in 2025 and its future success in meeting the policy intent is owned by DfE, but relies on contributions from multiple stakeholders. The key elements of the changes and responsibility for delivery are outlined here:



STUDENT FINANCE INFRASTRUCTURE

In line with Framework Agreement, provide the student finance elements of LLE service including:

SLC

- OWNS: Apply, assess, pay services (including IaG)
- OWNS: Interfaces with providers for TFL payments
- OWNS: Interfaces with providers for course records
- OWNS: Customer servicing
- OWNS: Account record keeping
- OWNS: Operational and financial reporting
- OWNS: Ongoing maintenance and support of technology
- OWNS: Non functional requirements around Fraud, Security, Accessibility, GDPR etc
- JOINTLY OWNS: Repayment infrastructure with HMRC (already in place)



Communications

adopting new study patterns

signs to the public
 employers to understand

measures any targets
 cultural change
 of modular / stackable

Delivery

courses in a way that supports
 including:

shorter courses of study
 recognised qualifications
 between providers
 of qualifications gained

Learner Records

model still to be addressed by

that can be funded by LLE
 on courses / modules
 manner

OWNS: Credit transfer information

OWNS: Repository for records of achievement, transcripts, qualifications and application related documents

Roles and Responsibilities for Delivering LLE

The introduction of LLE in 2025 and its future success in meeting the policy intent is owned by DfE, but relies on contributions from multiple stakeholders. The key elements of the changes and responsibility for delivery are outlined here:

Policy Infrastructure

LLE policy framework and the legislation that allows it to be delivered, including:

DfE

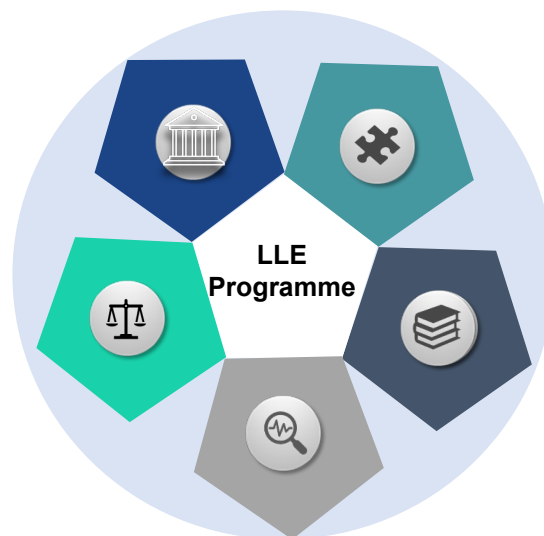
- OWNS: Consultation & Response
- OWNS: Policy Framework and Equality Impact Assessment
- OWNS: Regulations
- OWNS: Sector engagement on policy framework
- OWNS: Engagement with other domiciles

Student Finance Infrastructure

In line with Framework Agreement, provide the student finance elements of service including:

SLC

- OWNS: Apply, assess, pay services (including IaG)
- OWNS: Interfaces with providers for TFL payments
- OWNS: Interfaces with providers for course records
- OWNS: Customer servicing
- OWNS: Account record keeping
- OWNS: Operational and financial reporting
- OWNS: Ongoing maintenance and support of technology
- OWNS: Non functional requirements around Fraud, Security, Accessibility, GDPR etc
- JOINTLY OWNS: Repayment infrastructure with HMRC (already in place)



Communications

Deliver the ambition of students adopting new study patterns post-18 study:

DfE

- OWNS: Promotional campaigns to the public
- OWNS: Engagement with local employers to understand needs and economic drivers
- OWNS: Determines and measures any targets
- INFLUENCES: Adoption of cultural change
- INFLUENCES: Sector adoption of modular / stackable courses

Course Design & Delivery

Design, deliver and promote courses in a way that supports broader policy aspirations including:

HE / FE Providers

- OWNS: Design and deliver shorter courses of study
- OWNS: Link courses with recognised qualifications
- OWNS: Course recognition between providers
- OWNS: Incremental stacking of qualifications gained

Course Directory Search & Learner Records

Gaps in the current operating model still to be addressed by DfE including:

TBC

- OWNS: Research learning that can be funded by LLE
- OWNS: Comparison facility on courses / modules
- OWNS: Learning pathway planner
- OWNS: Credit transfer information
- OWNS: Repository for records of achievement, transcripts, qualifications and application related documents